

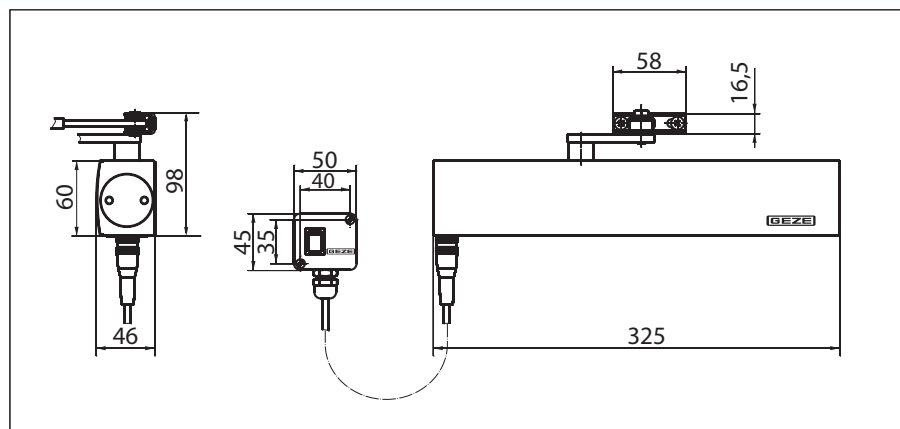
GEZE TS 4000 E

Link arm door closer for single-leaf doors of up to 1400 mm leaf width with electric hold-open device

TS 4000 E (24 V DC) overhead door closer, with an electric hold-open device with variable adjustment between 80° and 175° in accordance with EN 1155, is approved for use with left-hand and right-hand single-action doors with a door leaf width of up to 1400 mm and for installation on fire and smoke protection doors. In the event of a fire or power failure, the hold-open device is activated and the door closes securely. The size 1-6 closing force in accordance with EN 1154, with visual closing force display, and the thermo-constant closing speed can be conveniently adjusted from the front; the latching action is adjusted by means of the link arm.

Special version:

- GEZE TS 4000 E/transom installation on opposite hinge side 24 V DC



Area of application

- For single-action doors, leaf width of up to 1400 mm
- For right and left hung doors without the need for conversion
- For fire protection doors (door closers with mounting plate)
- Standard installation on door leaf hinge side; transom installation on opposite hinge side also possible

Closer technical data

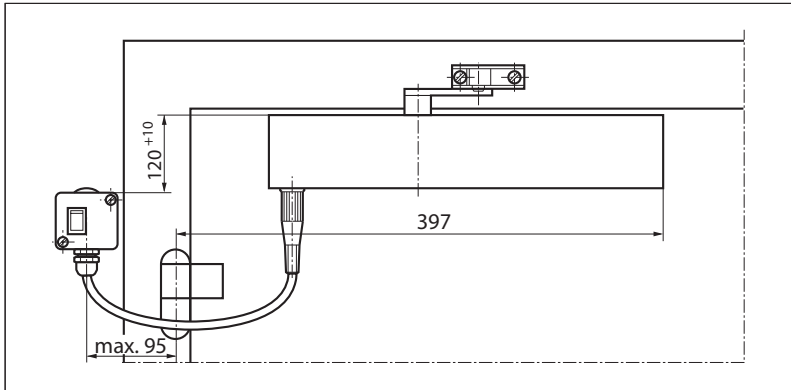
Product features	GEZE TS 4000 E closer
Closing force in accordance with EN 1154	1 - 6
Leaf width recommended up to	1400 mm
Same version for DIN left and DIN right	●
Supply voltage	24 V DC
IP rating	IP 43
Product tested in accordance with	Door closer tested in accordance with EN 1154 Hold-open device tested in accordance with EN 1155
Suitable for fire protection doors	●
Mounting plate with hole pattern acc. to EN 1154 Supplement 1	●
Length	325 mm
Installation depth	46 mm
Height	60 mm
Functions	
Adjustable closing force	with variable adjustment
Adjustable closing speed	●
Adjustable latching action	via link arm
Integrated back check	○
Closing force adjustment position	Front
Visual closing force display	●
Safety valve as protection against vandalism	●
Thermo-constant valves	●
Integrated hold-open device	Electric
Hold-open angle	80°-175°
Hold-open device can be overridden	●

● = yes

○ = no

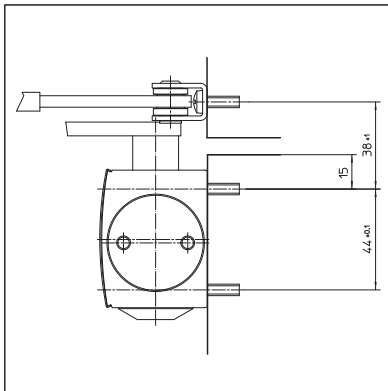
Door leaf installation/hinge side TS 4000 E

View

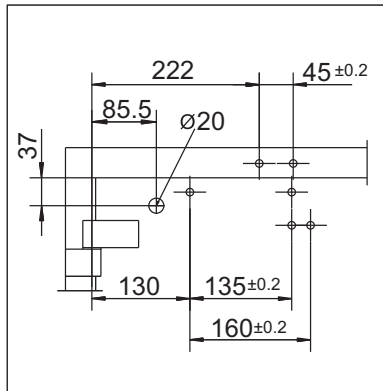


Installation example for GEZE TS 4000 E

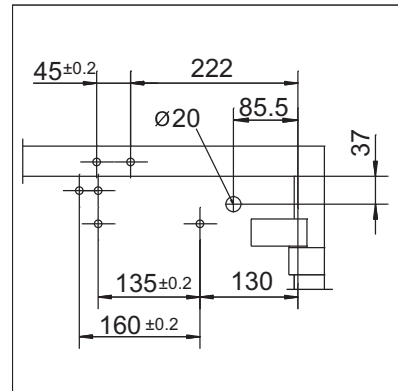
Direct installation



Cross section = direct installation

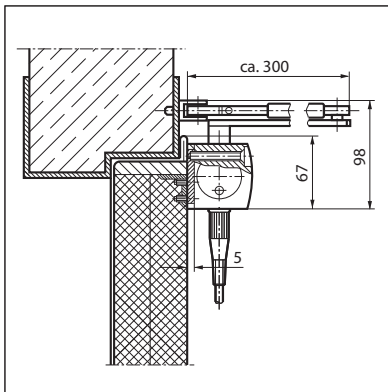


Fitting dimensions for left-hand door

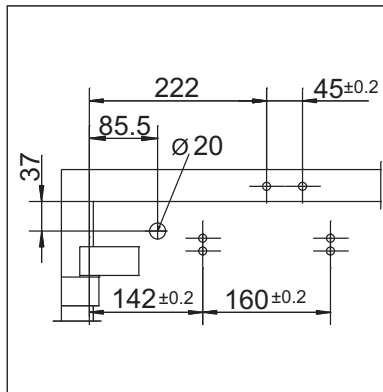


Fitting dimensions for right-hand door

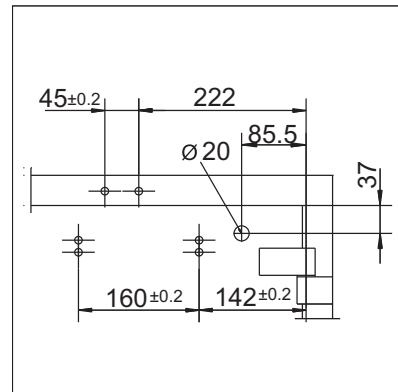
Installation with mounting plate



Cross section = installation with mounting plate



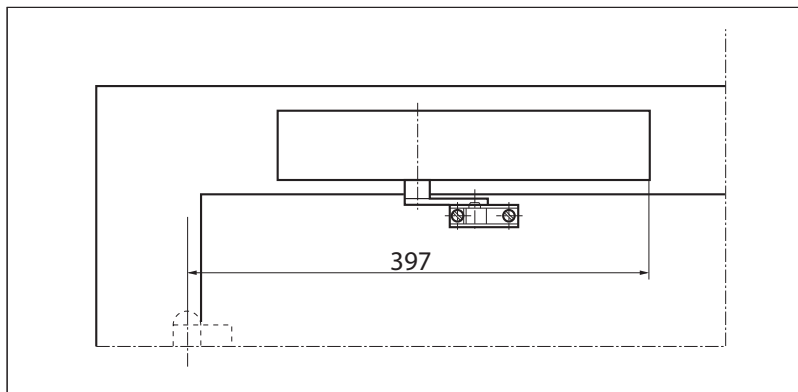
Fitting dimensions for left-hand door



Fitting dimensions for right-hand door

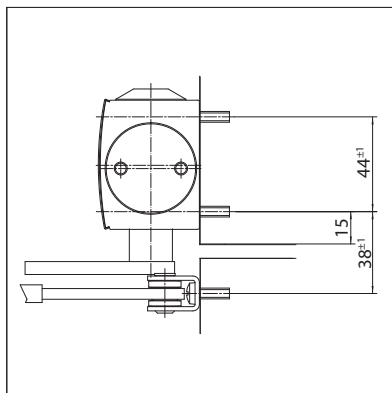
Transom installation/opposite hinge side TS 4000 E

View

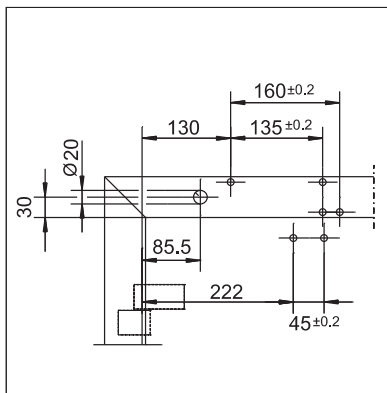


Installation example for GEZE TS 4000 E

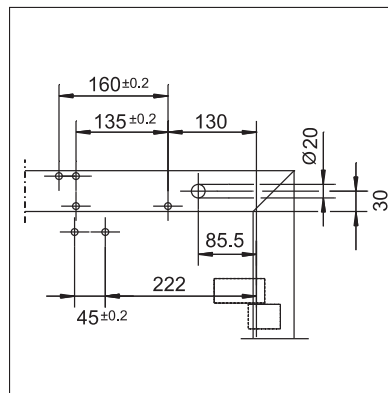
Direct installation



Cross section = direct installation

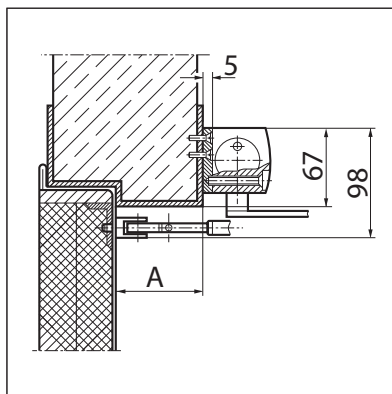


Fitting dimensions for right-hand door

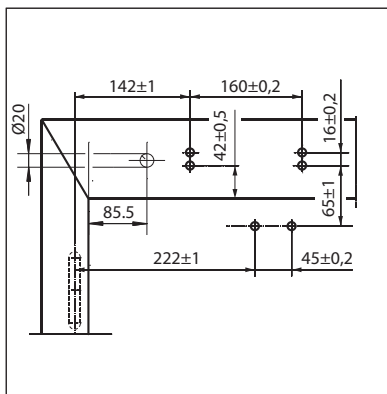


Fitting dimensions for left-hand door

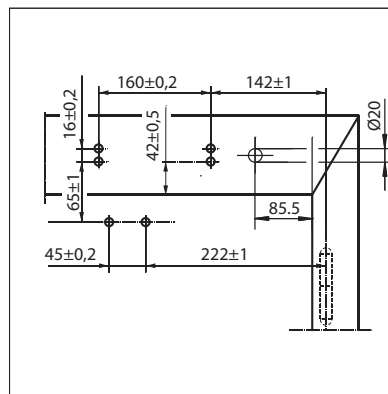
Installation with mounting plate



Cross section = installation with mounting plate
 A = max. 70 mm lintel depth for fire and smoke protection doors



Fitting dimensions for right-hand door



Fitting dimensions for left-hand door