



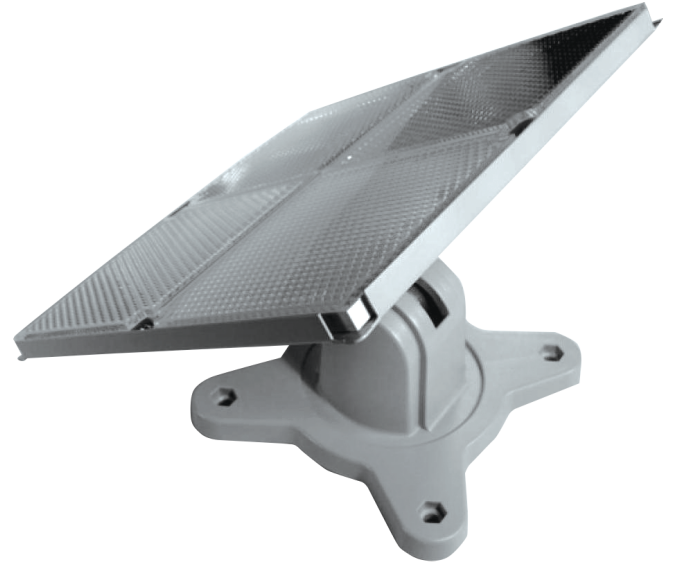
# FD-MB40

**Mnt Bracket LRK Prism x4 for use with FD-MB20, prisms not included**

## General

---

The FD-MB40 is used in conjunction with the FD-MB20 to mount a four reflective prism at an off perpendicular axis. It allows for easy adjustment to ensure that the required angle between 0° and 45° can be achieved. It can be mounted vertically or horizontally.



## Details

---

- Easy adjustable
- 0° to 45° range

# FD-MB40

Mnt Bracket LRK Prism x4 for use with FD-MB20, prisms not included

## Technical specifications

---

### Physical

---

Mounting type	Surface mount
---------------	---------------

---

### Environmental

---

Environment	Indoor
-------------	--------

---



As a company of innovation, Carrier Fire & Security reserves the right to change product specifications without notice. For the latest product specifications, visit [ie.firesecurityproducts.com](http://ie.firesecurityproducts.com) online or contact your sales representative.

Last updated on 4 May 2023 - 17:07